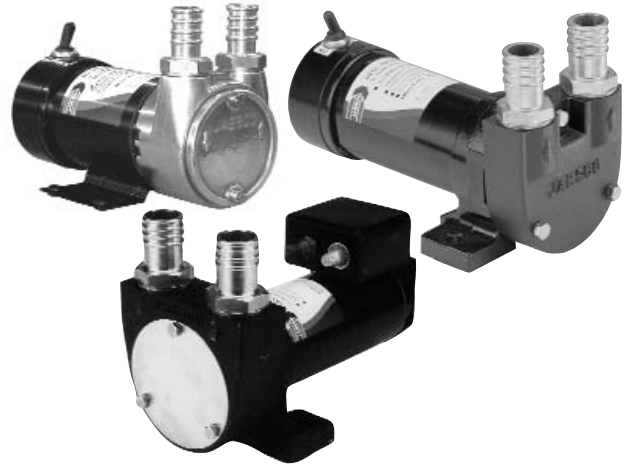


Sliding Vane Series Accessories

- The accessories contained herein are to complement our range of refuelling pumps, increasing their versatility, to aid installation.



Automatic Shut-Off Control (24 Volts only)

23528-1724B

Suitable for 23870 Models (24v)

23528-0024B

Suitable for 23540 & VR050 Models (24v)

23528-1024B

Suitable for 23550 & VR100 Models (24v)

See Data Sheet 43010-0029



23528-1024B

By-Pass Relief Valve

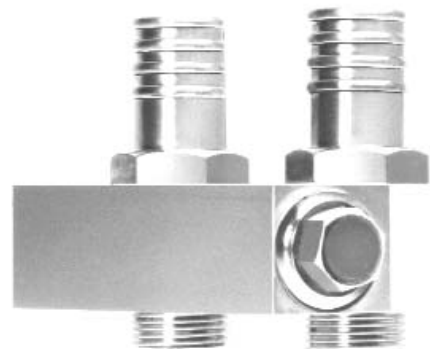
23525-0050B

Suitable for 23540 Models

23525-1050B

Suitable for VR050 Models

This unit is designed to allow the pump to run against a closed head as required when a trigger nozzle is used. Heads of 5.5 metres (0.50 bar) can still be attained.



See Data Sheet 43010-0030

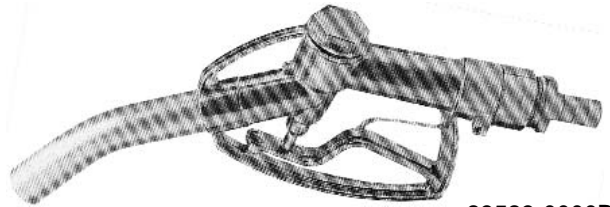
23525-1050B

Trigger Nozzle (Only to be used with By-pass pumps)**50143-0000B**

Polypropylene nozzle with 19mm (¾") connection

23523-0000B

Aluminium Nozzle with 25mm (1") connection

50142-0000B

23523-0000B

Flow Meter

Digital Electronic < 100 litre per minute 1" BSP connection

50141-0000

As 50142-0000B with 4m x 19mm Hoze and Trigger Nozzle 50143-0000B



50142-0000B

Foot Valve**23736-0000B**

19mm (¾") hose for 23870 & 50130, 250µm strainer

23739-0000B

25mm (1") hose for 23540 & VR050

23739-0100B

25mm (1") hose for 23540 & VR050 with HD shrouded strainer, 470µm

23759-0000B

32mm (1¼") hose for 23550 & VR100

23759-0100B

32mm (1¼") hose for VR100 with HD shrouded strainer, 470µm

Replacement mesh - 50302-0000

23759-0200B

25mm (1") hose for VR100 with HD shrouded strainer, 470µm

Replacement mesh - 50302-0000



23739-0000B

23739-0100B

23759-0100B

Check Valve**23735-0000B**

½" BSP for 23870

23735-0010B

As 23735-0000B including Hose Adaptor

23738-0000B

¾" BSP for 23540 & VR050

23738-0010B

As 23738-0000B including Hose Adaptor

23757-0010B

1" BSP including Hose Adaptor for 23550 & VR100



23738-0000B

Strainer**23732-0000**

250µm for 19mm hose suits 23870, 50130 & 50140

23733-0000

250µm for 25mm hose suits 23540 & VR050

23754-0000

250µm for 23736-0000B Foot Valve

23733-0010

250µm for 25mm hose up to 100 ltr/min

50290-1000

470µm Special Heavy Duty Shrouded strainer for 23540 & VR050

X5200-002

Coarse Strainer for 23739 Foot Valve

X5200-008

Coarse Strainer for 23759 Foot Valve

50300-1000

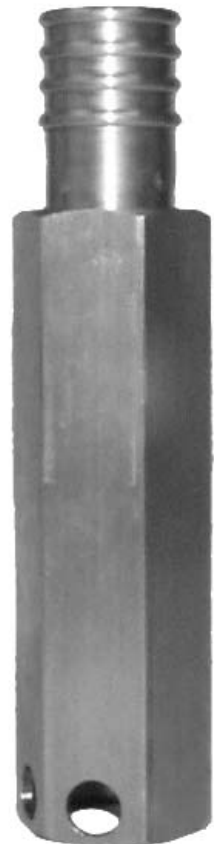
Special Heavy Duty Shrouded Strainer for 23550 & VR100 hose connection, 470µm

50300-2000

Heavy Duty Shrouded Strainer 1" BSP for Foot Valve 23759-0000B, 470µm



23733-0000



50290-1000

Hose Adaptor (Port Adaptor)

23533-1000

1/2" BSP x 19mm (3/4") for 23870 Models

23533-1100

As 23533-1000 but to suit 23735 Check Valve & 23736 Foot Valve (shortened thread)

23533-1400

3/4" BSP x 19mm (3/4") Tank Adaptor

23533-1100B

Kit containing 23533-1000 x 2 SP1613-1416 x 2

23543-1000

3/4" BSP x 25mm (1") for 23540 & VR050 Models

23543-1200

As 23543-1000 but to suit 23738 Check Valve & 23739 Foot Valve (shortened thread)

23543-1100B

Kit containing 23543-1000 x 2 SP1613-1415 x 2

23633-1000

1" BSP x 32mm (1 1/4") for 23550 & VR100 models

23633-1200

As 23633-1000 but with shortened thread to suit 23757 Check Valve and 23759 Foot Valve



23543-1000

X5020-003

X5020-003

1/2" BSP x 19mm (3/4") for 23870 models

X5020-002

3/4" BSP x 25MM (1") for 23540 & VR050 models

SP1613-1416

1/2" Sealing Washers 23870 Series

SP1613-1415

3/4" Sealing Washers VR050 Series

SP1613-1423

1" Sealing Washers VR100 Series

Hose

Diesel resistant PVC/rubber Alloy reinforced with rigid PVC spiral

23531-0001G

Hose 19mm (issue by mtr)

23531-0401G

Hose 19mm x 4 mtrs long

23531-0401B

Hose Kit 19mm x 4 mtrs inc x 4 Hose Clips

93002-0185

Hose Clips for 19mm Hose

23541-0001G

Hose - 25mm (issue by mtr)

23541-0501G

Hose - 25mm x 5 mtrs long

- Good Oil Resistance
- Flexibility at low temperatures range -25°C/+65°C
- Up to 15 Bar Burst Pressure

23541-0502B

Hose Kit 25mm x 5 mtrs long inc x 4 Hose Clips

93002-0184

Hose Clips for 25mm and 32mm Hose

23561-0000G

Hose - 32mm (issue by mtr)

23561-0700G

Hose - 32mm 7 mtrs long

SP3002-0183

Hose Clips for 32mm Hose

Jabsco



ITT Industries

USA

Jabsco

20 Icon
Foothill Ranch
CA 92610

Tel : +1 949 609 5106
Fax : +1 949 859 1254

UK

Jabsco

Bingley Road
Hoddesdon
Hertfordshire, EN11 0BU

Tel : +44 (0) 1992 450 145
Fax : +44 (0) 1992 467 132

GERMANY

Jabsco GmbH

Oststraße 28
22844 Norderstedt

Tel : +49 (0) 40 53 53 73 0
Fax : +49 (0) 40 53 53 73 11